

Oriana Jara Reference Center for Immigrants (CRAI)

The Oriana Jara Reference Center for Immigrants (CRAI) is a public service of the Municipal Secretariat for Human Rights and Citizenship (SMDHC), managed by the Franciscan Solidarity Association, which has been providing assistance to the immigrant population since November 2014 through:

Promotion of immigrants' rights;

Social, cultural and economic inclusion of the public served;

Articulation avec le réseau d'attention aux immigrants de la ville de São Paulo;

Training and education of public servants and other organizations.

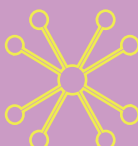
The service provides assistance in **several languages, free** and open to **all immigrant populations**, regardless of nationality or migratory status.

Services Offered



Documentation

Orientation on **migratory regularization**, Brazilian documentation, opening a bank account and simple translation of documents made by immigrants for immigrants.



Institutional Articulation and Training

Monitoring networks, organizations and groups in São Paulo, **carrying out partnerships, projects and socio-educational activities** on migration issues.



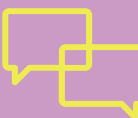
Social service

Social assistance with referral to public services such as **health, education and social assistance**. Orientation on reception spaces, access to rights, policies and social benefits.



Legal service

Free **legal orientation**, collection and forwarding of **complaints of rights' violations** with the support of the Public Defender's Office.



Psychological service

Free psychosocial care and activities in partnership with the extension group Veredas of the University of São Paulo.

Actions of CRAI / SP

CRAI Mobile Unit



Itinerant service of CRAI / SP in the various territories of the city. To find out about CRAI Mobile Unit programming, access the link: <http://bit.ly/craimovel>, or through the QR Code on the side.

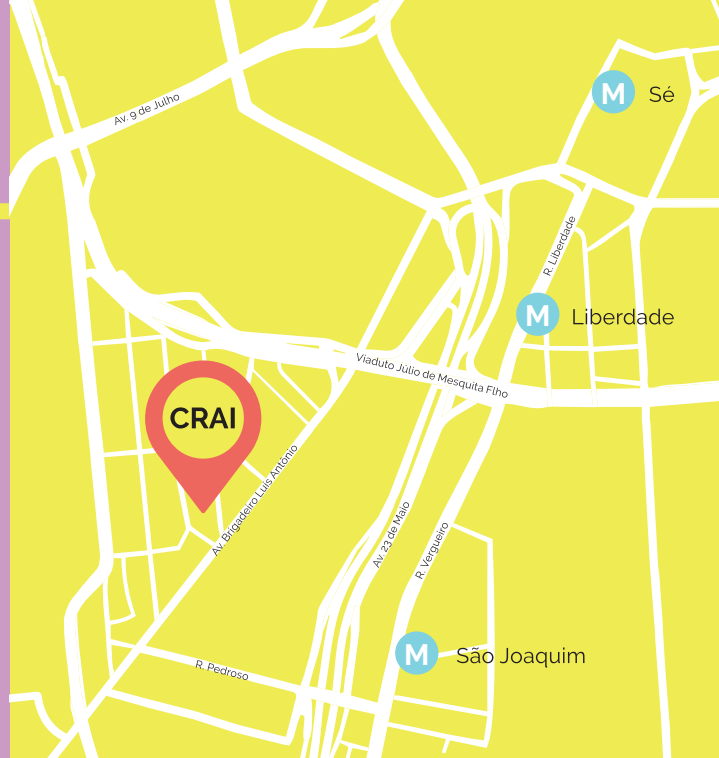


Open Doors - Portuguese courses for immigrants

Free Portuguese course for immigrants from the City of São Paulo at schools in the city. For more information, visit the link: <http://bit.ly/portasabertasportuguesparaimigrantes>

CRAI Occupy

Monitoring of Occupations and their residents and immigrant residents in the city of São Paulo.



Address

Rua Major Diogo, 834 - Bela Vista
(next to São Joaquim metro station - 1km)



Phones

(11) 2361-5069 / (11) 2631-3780



Opening hours

Monday to Friday, from 8am to 6pm



Email

crai@sefras.org.br



WhatsApp

(11) 98555-0981 / 98555-0218



CRAI

ORIANA JARA