



PREFEITURA DA CIDADE DE
SÃO PAULO

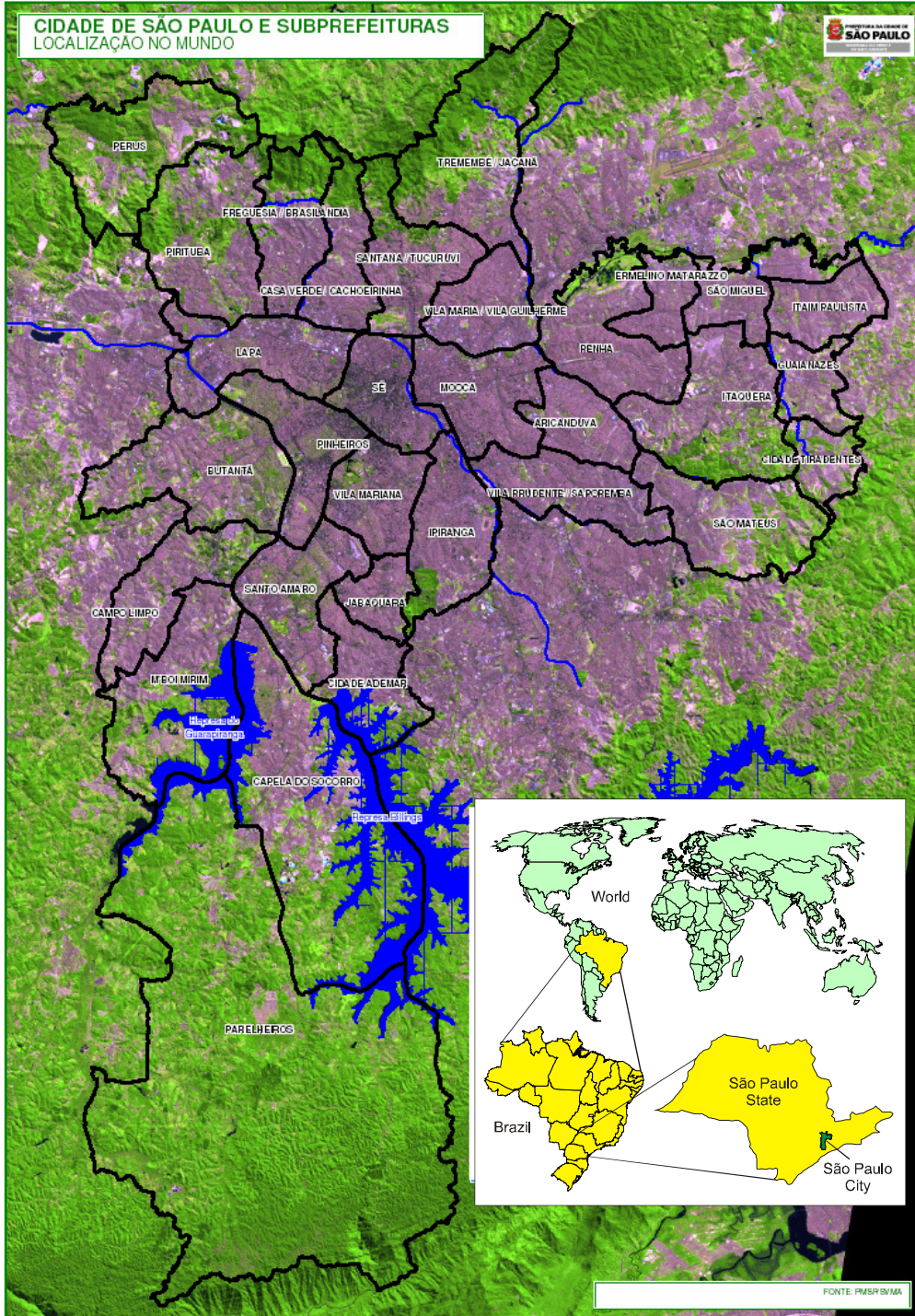
SECRETARIA DO VERDE E
DO MEIO AMBIENTE



INTERNATIONAL BIODIVERSITY WORKSHOP OF LOCAL ACTION FOR BIODIVERSITY

**BERGRIVIER MUNICIPALITY, SOUTH AFRICA
02 FEBRUARY 2011**

CIDADE DE SÃO PAULO E SUBPREFEITURAS
LOCALIZAÇÃO NO MUNDO



SÃO PAULO CITY

Southeast of Brazil
Capital of São Paulo State

1,525 Km²

Population 2010
11,057,629 inhabitants

21% covered by forest

LAB PROGRAM



PREFEITURA DA CIDADE DE
SÃO PAULO

SECRETARIA DO VERDE E
DO MEIO AMBIENTE



PREFEITURA DA CIDADE DE
SÃO PAULO
SECRETARIA DO VERDE E
DO MEIO AMBIENTE

SÃO PAULO
BIODIVERSITY REPORT | 2008



ENHANCING URBAN NATURE THROUGH A GLOBAL NETWORK OF LOCAL GOVERNMENTS

SÃO PAULO CITY LAB

2009

Biodiversity Report - Concluded

S

Durban Commitment - Signed

T

2010

COP 10 - Nagoya Declaration - Representative

E

Local Action Plan - Draft

P

2011

Commitment Plan of Action - Efforts

S

Incorporate Biodiversity in the Municipal Climate Changes Committee - Efforts

BIODIVERSITY CLIMATE CHANGES AND CEPA

2009

BIODIVERSITY WORKING GROUP

LOCAL ACTION PLAN FOR BIODIVERSITY

2011 - LOCAL ACTION PLAN

09 OBJECTIVES

62 ACTIONS FOR BIODIVERSITY

CLIMATE CHANGE CARBON EMISSIONS

TRANSPORT AND TRAFFIC



SÃO PAULO CITY AIR QUALITY

AIR POLLUTION



CLIMATE CHANGE LAND USE

WATER POLLUTION



CLIMATE CHANGE WATERPROOFING SOIL

FLOODS



BIODIVERSITY CLIMATE CHANGES

MITIGATING AND ADAPTING

SUSTAINABLE TRANSPORT

RENEWABLE ENERGY

GREEN PROCUREMENT

WAST TREATMENT

COMPENSATORY MEASURES

SUSTAINABLE CONSTRUCTION

BIODIVERSITY CLIMATE CHANGES

MITIGATING AND ADAPTING TO CLIMATE CHANGES

PAYMENT FOR ENVIRONMENTAL SERVICES

COMPACT CITY

REDUCING IMPACTS ON THE HEALTH

ENVIRONMENTAL EDUCATION AND PEACE CULTURE

PUBLIC POLICIES ON CLIMATE CHANGE

CLIMATE CHANGES

REDUCING CARBON EMISSIONS

■ 2 Landfills generating 350 thousand MWh of electricity

■ Sale of carbon credits

■ US\$ 39,5 million applied in the regions



CLIMATE CHANGE POLICY

**REDUCING CARBON EMISSIONS
LAW 14.933/2009**



2005 - 2010

20% REDUCTION

TARGET

30 %

MUNICIPAL COMMITTEE

6 WORKING GROUPS

2011

**SÃO PAULO CITY CLIMATE CHANGES ACTION PLAN
INCLUDING BIODIVERSITY ACTION PLAN**

SÃO PAULO CITY FAUNA AND FLORA

INVENTORY AND CARE



More than 700 species

43,000 victimized
animals attendance
due urban pressure



Control of Invasive
Species

Endangered Species
Action Plan



COMUNICACION, EDUCACION AND PUBLIC AWARENESS

CEPA



**SINCE 2006
EDUCATION FOR
SUSTAINABILITY**

**UMAPAZ
UNIVERSITY FOR
ENVIRONMENTAL AND
PEACE CULTURE**

CEPA

**QUAL BICHO
TEM A CARA DE
SÃO PAULO?**
é você quem vai escolher!

Entre no site:
www.prefeitura.sp.gov.br/biodiversidade
e **vote** no seu preferido



Você sabia que o município de São Paulo
possui **700 espécies** de animais silvestres
observados pela Divisão de Fauna da
Secretaria do Verde?

Acesso www.prefeitura.sp.gov.br/biodiversidade
e conheça todos eles.
Siga a gente no twitter: [@saopaulobiodive](https://twitter.com/saopaulobiodive)



CONTEST TO ELECT THE
ANIMAL SYMBOL OF THE CITY
JUNE-SEPTEMBER 2010

15 SPECIES PRE SELECTED BY
TECHNICAL INSTITUTIONS

84,140 VOTERS

THE WINNER RECEIVED 16,689
VOTES

WEBSITE FOR BIODIVERSITY

ONÇA-PARDA (Felis concolor carcharias)

Local: APA Cuiabá-Matozinhos - Foto: Camera Trap (ID:PAVC 2)

2010



03, 24, 2010 17:08:05

SÃO PAULO CITY CLIMATE CHANGES

QUESTIONS

FLOODS

1) HOW TO FACE FLOODS IN A SCENARIO OF HUGE WATERPROOFING SOIL IN A BIG CITY?

BIODIVERSITY AND THE CITY

2) HOW TO MAKE BIODIVERSITY PRIORITY IN A MASTER PLAN?



ANGELA BRANCO
abranco@prefeitura.sp.gov.br

Thank you!

<http://www.prefeitura.sp.gov.br>

Luciano Candisani