



PREFEITURA DA CIDADE DE
SÃO PAULO

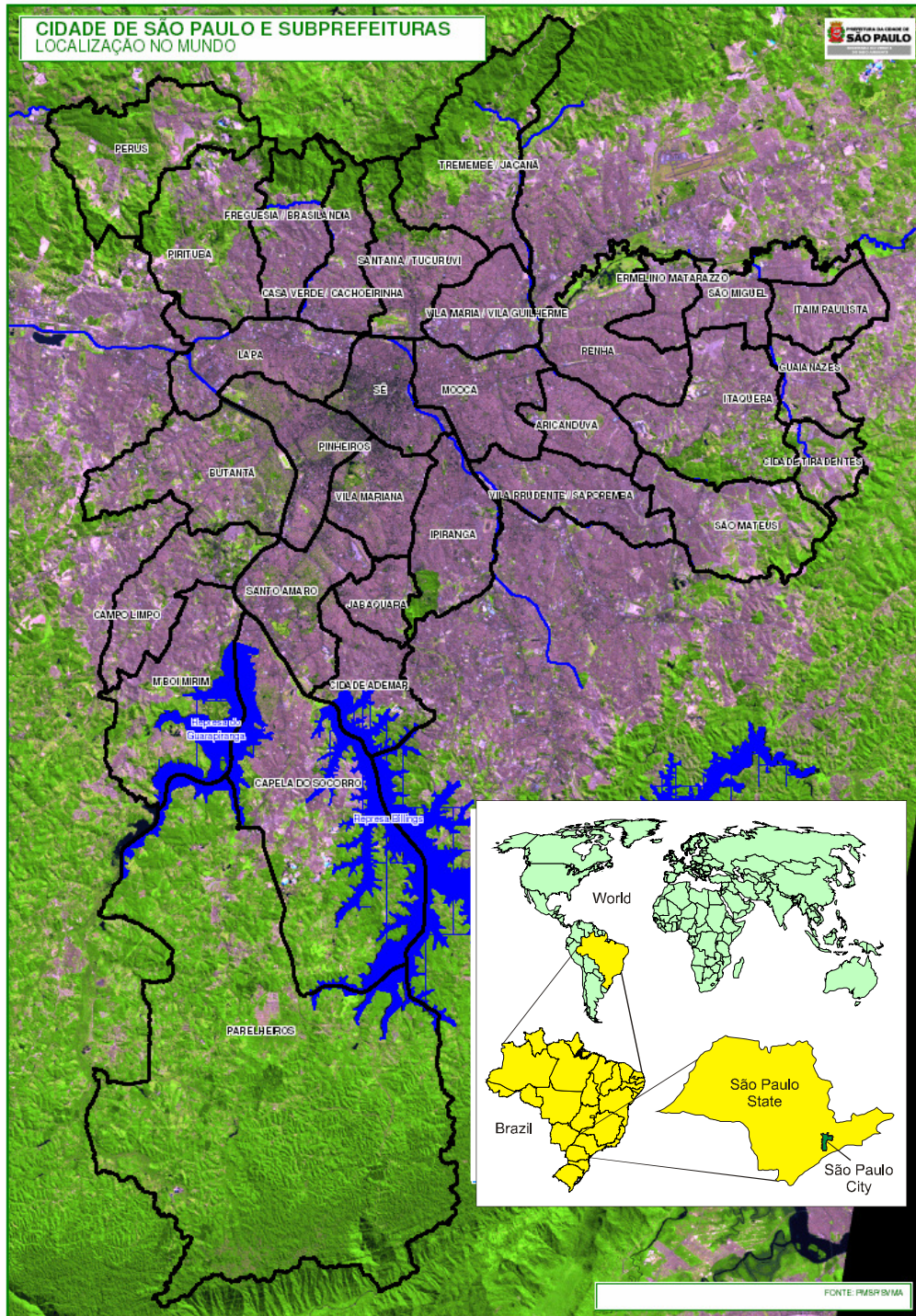
SECRETARIA DO VERDE E
DO MEIO AMBIENTE



meio
ambiente

CITIES AND BIODIVERSITY LOCAL INITIATIVES

CURITIBA - JANUARY, 7, 2010



SÃO PAULO CITY

- Located in Southeast of Brazil in State of São Paulo

- Size: 1,525 Km²

- Estimated population: 10,900,000 inhabitants

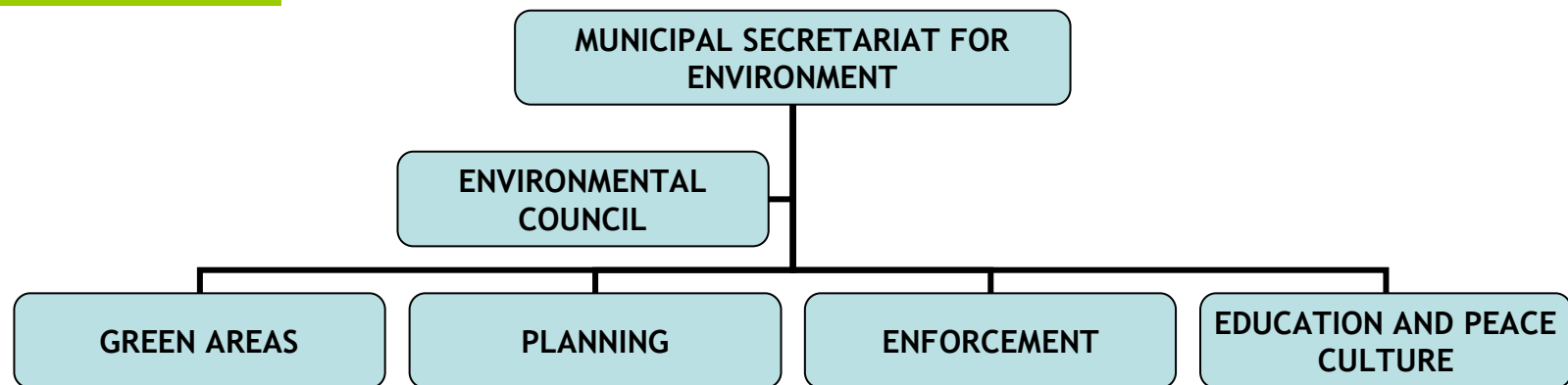
21% covered by forest

MUNICIPAL SECRETARIAT FOR ENVIRONMENT SÃO PAULO CITY

SVMA

Created in 1993 by the Municipal Law 11.426

STRUCTURE



BUDGET

2005 - US\$ 40 millions - 0,5 % budget of City Hall

2009 - US\$ 194 millions - 1,42% budget of City Hall

2010 - US\$ 236 millions

1.135 employees of the municipality + 700 private services

SÃO PAULO CITY

GREEN AREAS

URBAN PARKS

51 Urban Parks
Until 2012: More 6 Urban Parks

NATURAL PARKS

2 Natural Parks
Area: 1,873 hectares

Until 2012: More 5 Natural Parks



SÃO PAULO CITY

GREEN AREAS

MUNICIPAL AREAS OF ENVIRONMENTAL PROTECTION - APA

Different from the Integral Conservation Unit.
The lands inside can be public or private.

2 APAS - 22,4% area of the City

Area: 34,172 hectares

RIPARIANS PARKS

Program of Environmental Recuperation of Water Courses

07 Riparians Parks

Area: 1,945 hectares

Until 2012 - More 27 Riparians Parks



SÃO PAULO CITY

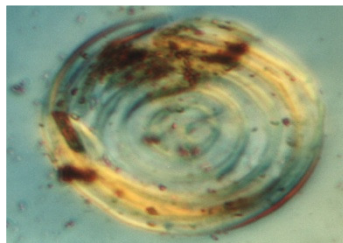
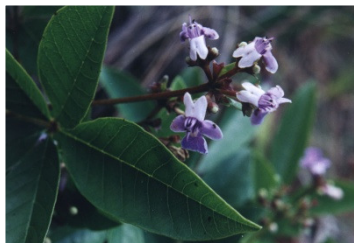
FLORA

MUNICIPAL HERBARIUM

- 9,600 registered samples
- Member of the *Index Herbarium*. Publication from selected herbarium around the world.

ACTIVITIES

- Subsidies reports and the creation of city parks
- Floristic studies to support the creation of Botanic Routes for environmental education activities
- Courses



SÃO PAULO CITY

FLORA

URBAN TREE PLANTING PROGRAM

- Promoting the arborization of the City
 - Promoting the connectivity - creating green corridors
- 126 wild species of plants to feed and support the fauna

PLANTING NUMBERS

2005	2006	2007	2008
37,855	168,576	172,988	185,164



SÃO PAULO CITY

FAUNA

STRUCTURE

- Technical Division of Veterinary Medicine and Management of the Wild Fauna - Ibirapuera Park
- Center for Management and Preservation of Wild Animals - Anhanguera Park

MANAGEMENT OF WILD ANIMALS

- Veterinary medical treatment with biological attendance to the wild animals victimized by urban pressure or apprehended from the illegal trade.
- Until 2009: 39,081 managed animals.



SÃO PAULO CITY

FAUNA

WILD FAUNA INVENTORY

More than **435 indigenous species** of mammals, birds, reptiles, amphibians identified in the city.



SÃO PAULO CITY

WATER

WATERSHEDS DEFENSE PROGRAM

- Protection of water sources in São Paulo City
- State and Municipality governments working together:
 - To avoid new illegal settlements
 - To remove irregular occupation near water sources
- Environmental education
- Implementation of activities related to sports, entertainment and tourism



SÃO PAULO CITY

CLIMATE CHANGES

REDUCING CARBON EMISSIONS



- 2 Landfills generating 350 thousand MWh of electricity
- Sale of carbon credits
- US\$ 39,5 million applied in the regions



SÃO PAULO CITY

CLIMATE CHANGES

VEHICLE POLLUTION INSPECTION

- 6,4 million vehicles in the city
- 14 Inspection Centers

NUMBERS OF INSPECTIONS

2008	2009 (Jan - Nov)	2010
53,226	1,305,023	All the fleet



SÃO PAULO CITY LAW ENFORCEMENT

SVMA 's CONTROL POLICY

- Inspection and control of crimes against flora, fauna, water, soil, air.
- 80 Environmental Control Agents

ENVIRONMENTAL POLICE OF SÃO PAULO CITY HALL

- 430 Environmental Policeman

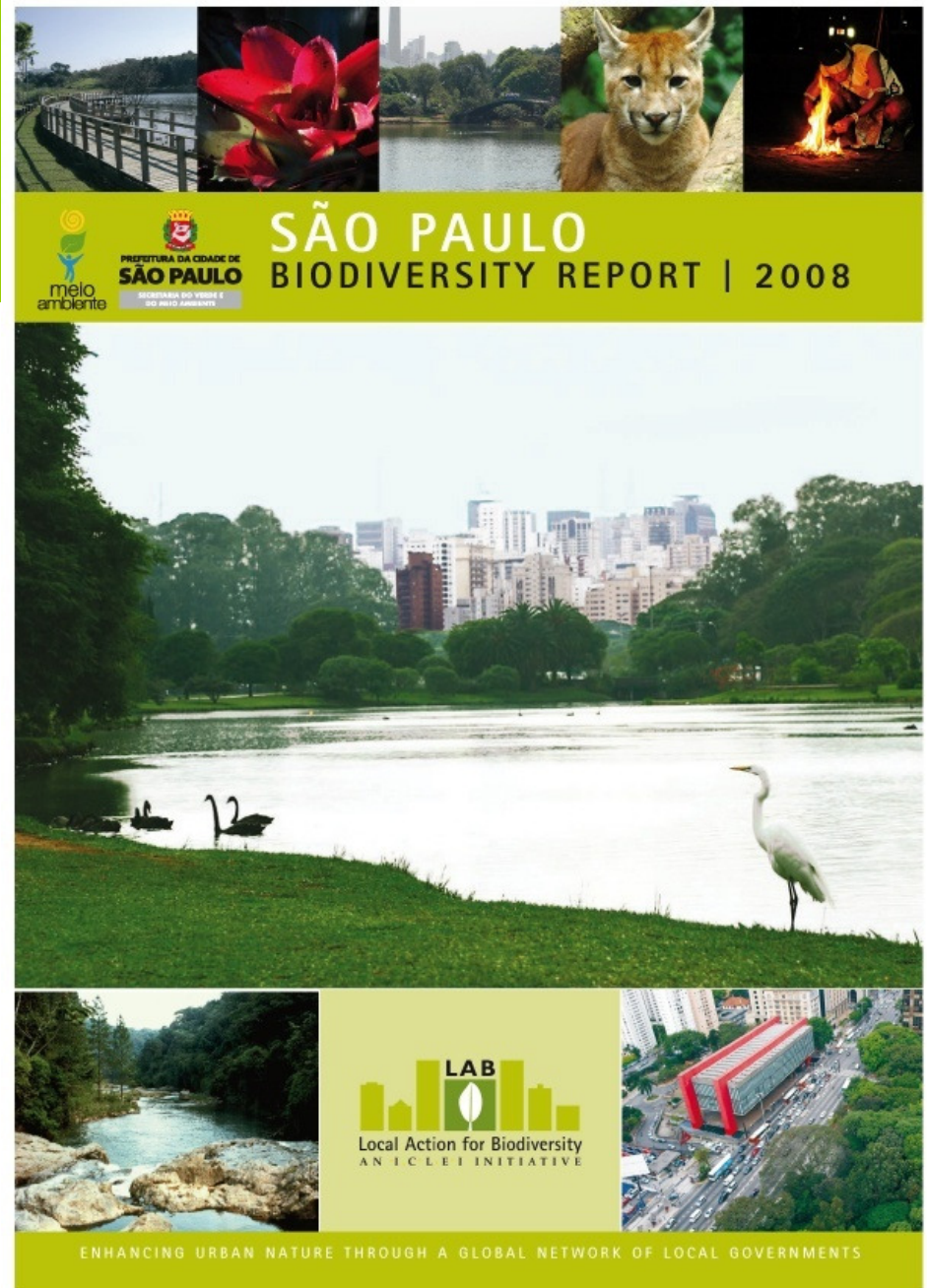


SÃO PAULO CITY

OTHER ACTIONS

- **COMPENSATORY MEASURES**
- **PAYMENT FOR ENVIRONMENTAL SERVICES**
- **ENVIRONMENTAL EDUCATION AND PEACE CULTURE**
- **PUBLIC POLICIES**
- **DESCENTRALIZED GOVERNANCE**
- **PUBLICATIONS**

LAB PROGRAM PIONER CITY



22 Maio 2009

<http://www.prefeitura.sp.gov.br>

Helio Neves - helion@prefeitura.sp.gov.br

THANK YOU!

